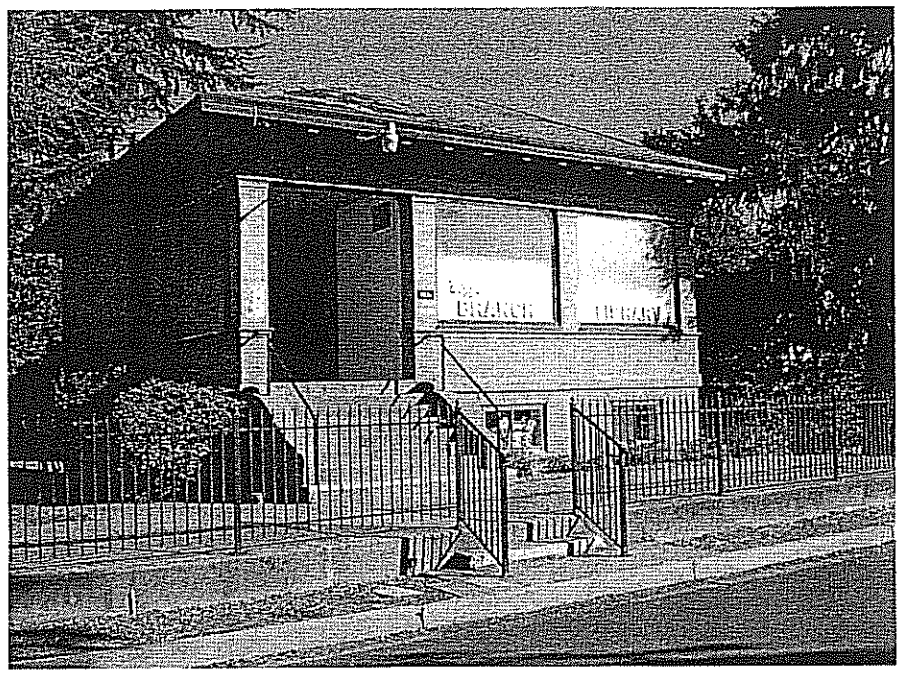


### ABBREVIATIONS

Z	ANGLE	G.B.	GRAB BAR	S	SOUTH
ZD	DIAMETER OF ROUND	G.I.	GALVANIZED IRON	S.D.	SOLID BLOCK
ZD	RECTANGULAR	GA.	GALVE	S.C.	SOLID COPE
ZF	FOUND OR NUMBER	GALV.	GALVANIZED	S.C.D.	SEAT COVER DISPENSER
(E)	EXISTING	GL.	GLASS	S.D.	STORM DRAIN
(N)	NEW	GLB	GLU LAM BEAM	S.M.	SHEET METAL
(R)	REMOVE	GND	GROUND	S.M.S.	SHEET METAL SCREW
@	AT	GR.	GRADE	S.H.D.	SANITARY HAPPH DISPENSER
□	PROPERTY LINE OR PLATE	GSM	GALVANIZED SHEET METAL	S.H.DSP.	SANITARY HAPPH DISPOSAL
□	CENTER LINE	GYP. BD.	Gypsum BOARD	S.O.V.	SHUT OFF VALVE
A.B.	ANCHOR BOLT	H.B.	HOSE BID	S.S.	STAINLESS STEEL
A.C.	ASPHALT CONCRETE	H.C.	HOLLOW CORE	S.T.S.	SELF-TAPPING SCREW
A.D.	AREA DRAIN	H.D.	HOT DIPPED	S.V.	SHEET VINYL
A.F.F.	ABOVE FINISH FLOOR	H.H.	HIX HEAD	SCHD.	SCHEDULE
A.C.	AIR CONDITIONING	H.M.	HOLLOW METAL	SEC.	SECTION
ACC.	ACCESSIBLE	H.P.	HIGH POINT	SHT.	SHEET
ACCS.	ACCESSORIES	H.DWR.	HARDWARE	SHTG.	SHEATHING
ACST.	ACOUSTICAL	HDR.	HEADER	SHOW.	SHOWER
ADJ.	ADJUST	HORIZ.	HORIZONTAL	SHI.	SIMILAR
ADJUST.	ADJUSTABLE	HR.	HOUR	SLT.	SEALANT
AGGR.	AGGREGATE	HTR.	HEATER	SP.	SPACE
AL	ALUMINUM	HVAC.	HEATING, VENTILATING, & AIR CONDITIONING	SPEC.	SPECIFICATION
ALT.	ALTERNATE	I.C.B.	INSULATED CONCRETE BLOCK	SFR.	SPEAKER
ANCH.	ANCHOR	I.D.	INSIDE DIAMETER (DIM.)	SPL.	SPLASH
ANCHD.	ANCHORED	I.E.	INVERT ELEVATION	SQ.	SQUARE
APP.	APPARATUS	I.H.	INSULATED, INSULATED INTERIOR	SS	SANITARY SEWER
APPX.	APPROXIMATE	J.H.	JOIST HANGER	S.S.D.	SEE STRUCTURAL DRAWINGS
ARCH.	ARCHITECTURAL	JST.	JOIST	S7.	STAIR
ASPH.	ASPHALT	JT.	JOINT	STAG.	STAGGERED
B.B.	BULLET BOARD	J.D.	JOCK DOWN	STD.	STANDARD
B.M.	BENCH MARK	KIT	KITCHEN	STL.	STEEL
B.O.	BY OWNER	KS	KITCHENSPACE	STOR.	STORAGE
B.O.W.	BOTTOM OF WALL	L.F.	LINEAR FEET	STR.	STRUCTURAL
B.U.	BUILDUP	LAB.	LABORATORY	SUSP.	SUSPENDED
BD.	BOARD	LAM.	LAMINATE	SWDD.	SWITCHBOARD
BEV.	BEVELED	LAV.	LAVATORY	SYM.	SYMMETRICAL
BIRM.	BIRMINGHAM	LH	LEFT HAND	T4B	TOP AND BOTTOM
B.K.	BACKING	LIF.	LOCATED	T4G	TONGUE AND GROOVE
B.D.G.	BUILDING	LOC.	LOCATED	T.B.	TOWEL BAR
B.L.	BLOCK	LT	LIGHT	T.O.	TOP OF
B.L.G.	BLOCKING	M.B.	MACHINE BOLT	T.O.C.	TOP OF CONCRETE
B.M.	BEAM	M.O.	MASONRY OPENING	T.O.G.	TOP OF GRADE
B.M.	BOTTOM	M.S.	MACHINE SCREW	T.O.P.	TOP OF PAVEMENT
BOT.	BOTTOM	M.T.	METAL THRESHOLD	T.O.S.	TOP OF SIDEWALK
BRCC.	BRACING	MAINT.	MAINTENANCE	T.O.W.	TOP OF WALL
C.	COMPACT	MFR.	MANUFACTURER	T.P.D.	TOILET PAPER DISPENSER
C.B.	CATCH BASIN	MCH.	MECHANICAL	T.S.	TUBE STEEL
C.B.D.	CARPET BOARD	MCHD.	MECHANICAL MEMBRANE	TBD.	TACKBOARD
C.E.S.	CARPET EDGE STRIP	M.E.S.	METAL EDGE STRIP	TEL.	TELEPHONE
C.I.	CAST IRON	MET.	METAL	TEMP.	TEMPERED
C.J.	CONSTRUCTION JOINT	MFR.	MANUFACTURER	THK.	THICK
CL.	CHALK LINE	MNI.	MINIMUM	TRANS.	TRANSFORMER
C.M.U.	CONCRETE MASONRY UNIT	MISC.	MISCELLANEOUS	TRD.	TREAD
C.O.	COLD WATER	MOD.	MODIFICATION, MODIFY	TR.	TRUSS
C.W.	CABINET	MUL.	MULLION	TV.	TELEVISION
CAD.	CADMIUM	MULT.	MULTIPLE	TY.	TYPICAL
CC.	CONTACT CAR	NOR.	NORTH	U.O.H.	UNLESS OTHERWISE NOTED
CEL.	CERAMIC	N.I.C.	NOT IN CONTRACT	U.V.	UNIT VENT
CFR.	CERAMIC	N.I.S.	NOT TO SCALE	UR.	UNDERLAMENT
CFR.	CERAMIC	NECC.	NECESSARY	V.A.T.	VERNL ASBESTOS TILE
CFR.	CERAMIC	NO. OR #	NUMBER	V.C.T.	VERNL COMPOSITION TILE
CFR.	CERAMIC	NO.	NOMINAL	V.C.TB	VERNL COVERED TACKBOARD
CFR.	CERAMIC	O.C.	ON CENTER	VERT.	VERTICAL
CFR.	CERAMIC	O.D.	OUTSIDE DIAMETER (DIM.)	VEST.	VESTIBULE
CFR.	CERAMIC	O.F.	OVER FLOW	W.C.	WATER CLOSET
CFR.	CERAMIC	O.H.	OVER HEAD, OVERHEAD	W.H.	WATER HEATER
CFR.	CERAMIC	O.V.	OVER	W.O.	WHERE OCCURS
CFR.	CERAMIC	OBS.	OBSOLETE	W.S.	WOOD SCREW
CFR.	CERAMIC	OPR.	OPERATION	W.W.F.	WELDED WIRE FABRIC
CFR.	CERAMIC	OPP.	OPPOSITE	W.	WITH
CFR.	CERAMIC	P.D.P.	POWER DRIVEN	W/O	WITHOUT
CFR.	CERAMIC	F.A.S.T.	FASTENER	WOOD	WOOD
CFR.	CERAMIC	F.P.F.	FRAGILE FINISH	W.D.	WINDOW
CFR.	CERAMIC	F.P.F.	FRAGILE FINISH	WH.BD.	WHITE BOARD
CFR.	CERAMIC	F.P.F.	FRAGILE FINISH	WP.	WATERPROOF
CFR.	CERAMIC	F.P.F.	FRAGILE FINISH	W.SCT.	WEATHER STRIPPING
CFR.	CERAMIC	F.P.F.	FRAGILE FINISH	WT.	WEIGHT
CFR.	CERAMIC	F.P.F.	FRAGILE FINISH	WTR.	WATER
CFR.	CERAMIC	F.P.F.	FRAGILE FINISH	YD.	YARD



# ADA UPGRADES AT THE BIGGS LIBRARY FOR THE CITY OF BIGGS

### PROJECT TEAM

**ARCHITECT**  
THOMSON & HENDRICKS, INC. ARCHITECTS & PLANNERS  
60 DECLARATION DRIVE  
CHICO, CA 95973  
(530) 342-5669

**STRUCTURAL ENGINEER**  
VERTECH ENGINEERING INC.  
353 RIO LINDO AVE. #200  
CHICO, CA 95936  
(530) 899-8716

**ELECTRICAL ENGINEER**  
PACE ENGINEERING INC.  
1730 SOUTH STREET  
REDDING CA, 96001  
(530) 244-0202

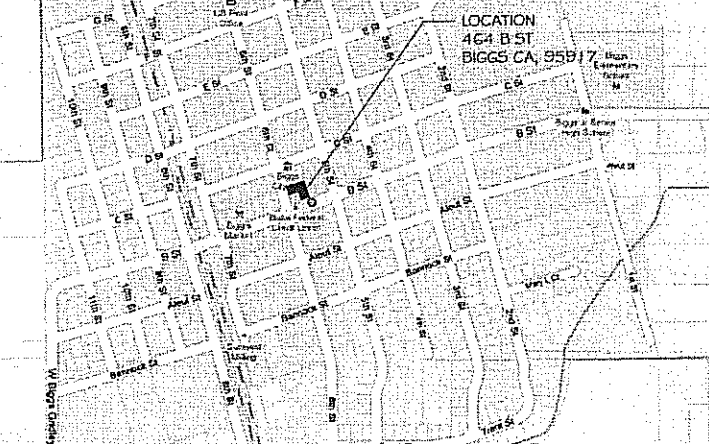
### GENERAL NOTES

- THE INTENT OF THESE DRAWINGS AND SPECIFICATIONS IS THAT ALL WORK IS IN ACCORDANCE WITH TITLE 24, CALIFORNIA CODE OF REGULATIONS, AND ALL OTHER APPLICABLE CODES AND REGULATIONS. NOTHING ON THESE DRAWINGS SHALL BE CONSTRUED TO PERMIT WORK NOT CONFORMING TO ALL APPLICABLE CODES AND REGULATIONS.
- CONSTRUCTION SHALL COMPLY WITH CALIFORNIA CODE OF REGULATIONS INCLUDING THE FOLLOWING:  
TITLE 24 PART 2 - 2007 CALIFORNIA BUILDING STANDARDS ADMINISTRATIVE CODE  
TITLE 24 PART 3 - 2007 CALIFORNIA ELECTRICAL CODE (2005 NEC W/ CA AMENDMENTS)  
TITLE 24 PART 4 - 2007 CALIFORNIA MECHANICAL CODE (2006 IMC W/ CA AMENDMENTS)  
TITLE 24 PART 5 - 2007 CALIFORNIA PLUMBING CODE (2006 UPC W/ CA AMENDMENTS)  
TITLE 24 PART 6 - 2007 CALIFORNIA ENERGY CODE (2005 CA ENERGY CODE)  
TITLE 24 PART 9 - 2007 CALIFORNIA FIRE CODE (2006 IFC W/ CA AMENDMENTS)  
TITLE 24 PART 12 - 2007 CALIFORNIA REFERENCED STANDARDS CODE  
TITLE 19 - CALIFORNIA FIRE MARSHAL REGULATIONS
- HAZARDOUS MATERIALS MAY BE PRESENT IN THE EXISTING BUILDING CONSTRUCTION. THE CONTRACTOR SHALL ACQUAINT HIMSELF WITH THE HAZARDOUS MATERIAL REPORT AND ABATEMENT SPECIFICATIONS FOR MATERIALS THAT WILL BE ENCOUNTERED. THE LOCATIONS KNOWN TO CONTAIN HAZARDOUS MATERIALS, AND THE PROCEDURES FOR THEIR ABATEMENT. THE CONTRACTOR SHALL COORDINATE HAZARDOUS MATERIAL ABATEMENT WITH THE HAZARDOUS SUBCONTRACTOR PRIOR TO THE START OF DEMOLITION WORK. IF SUSPECTED MATERIALS NOT IN THE REPORT ARE ENCOUNTERED, THE CONTRACTOR SHALL IMMEDIATELY NOTIFY THE OWNER'S REPRESENTATIVE FOR INSTRUCTIONS PRIOR TO PROCEEDING WITH ADDITIONAL WORK. THE CONTRACTOR SHALL IMMEDIATELY POST NOTICES AND TAKE PRECAUTIONS NECESSARY TO ENSURE THE HEALTH AND SAFETY OF ALL WORKERS, THE STAFF, AND THE PUBLIC.
- CHECK THE ENTIRE SUBSTRATE FOR DAMAGE OR OTHER DETERIORATION AND NOTIFY THE ARCHITECT IMMEDIATELY OF ANY REMEDIAL CONDITIONS FOUND.
- THE INTENT OF THESE DRAWINGS AND SPECIFICATIONS IS THAT THE WORK OF THE ALTERATION, REHABILITATION OR RECONSTRUCTION IS TO BE IN ACCORDANCE WITH TITLE 24, CALIFORNIA CODE OF REGULATIONS. SHOULD ANY EXISTING CONDITIONS SUCH AS DETERIORATION OF NONCOMPLYING CONSTRUCTION BE DISCOVERED WHICH IS NOT COVERED BY THE CONTRACT DOCUMENTS WHEREIN THE FINISHED WORK WILL NOT COMPLY WITH TITLE 24, CALIFORNIA CODE OF REGULATIONS, A CHANGE ORDER OR A SEPARATE SET OF PLANS AND SPECIFICATIONS, DETAILING AND SPECIFYING THE REQUIRED REPAIR WORK, SHALL BE SUBMITTED TO AND APPROVED BY DSA BEFORE PROCEEDING WITH REPAIR WORK.

### LIST OF SHEETS

ARCHITECTURAL	
T1	TITLE
SP1	SITE PLAN DEMO
SP2	SITE PLAN NEW
A1	FLOOR PLAN DEMO
A2	FLOOR PLAN NEW
A3	SECTIONS
A4	ELEVATIONS
A5	ENLARGED PLANS / INTERIOR ELEVATIONS
D1	DETAILS
D2	DETAILS
D3	ELEVATOR SECTIONS / DETAILS

### VICINITY MAP



### SCOPE OF WORK

NOT FOR CONSTRUCTION

CHECKED BY: MS  
JOB NO: p29034

DRAWN BY: MC  
DATE: 01-25-10  
DRAWING NAME: TITLE SHEET

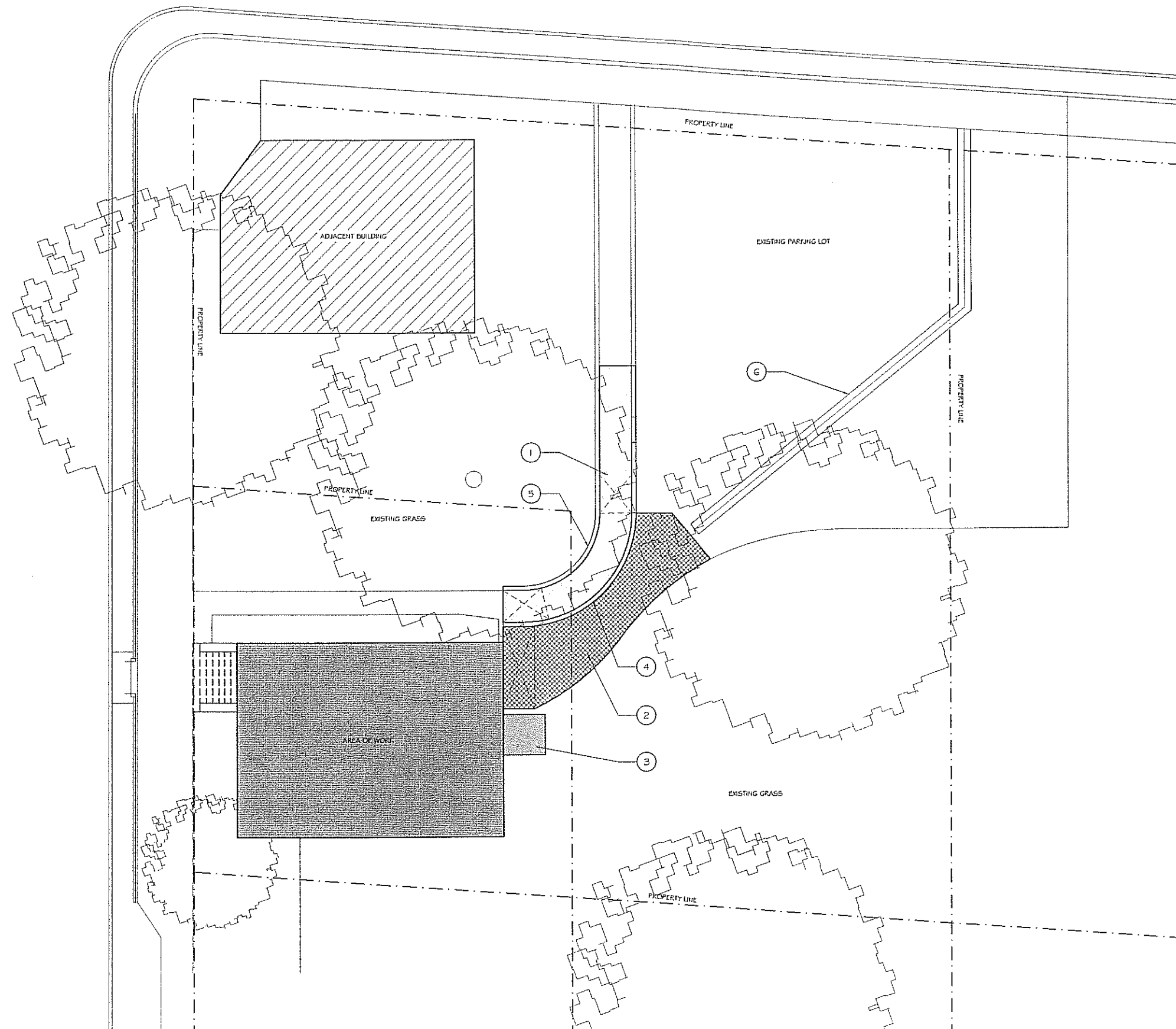
DRAWING NO. T1

**THOMSON & HENDRICKS**  
ARCHITECTS AND PLANNERS  
Paul Hendricks, A.I.A.  
60 Declaration Drive, Suite A  
Chico, California 95973  
Phone: (530) 342-5669  
Fax: (530) 342-7592  
E-Mail: landh\_arch@bcglobal.net

ADA UPGRADES  
AT THE  
BIGGS LIBRARY  
FOR THE  
CITY OF BIGGS

BIGGS, BUTTE COUNTY,  
CALIFORNIA

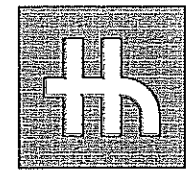
DRAWINGS AND SPECIFICATIONS ARE THE PROPERTY OF THE ARCHITECT. THE CONTRACTOR SHALL CHECK ALL DIMENSIONS AT THE JOB AND SHALL BE RESPONSIBLE FOR ALL DISCREPANCIES BETWEEN ELEMENTS OF THE ACTUAL WORK AND THOSE SHOWN IN THE DOCUMENTS OF ARCHITECTURAL PHOTOGRAPHS. THE CONTRACTOR SHALL ALSO BE RESPONSIBLE FOR ALL FINISHES OF MATERIALS OF EQUIPMENT CALLED FOR TO PERFECTLY LEAVE THE WORK.



KEY NOTES

- 1 REMOVE EXISTING CONCRETE WALK.
- 2 REMOVE EXISTING AC PAVING
- 3 REMOVE EXISTING LANDSCAPING, EXCAVATE AS NEEDED FOR LIFT PAD
- 4 EXISTING CURB TO REMAIN
- 5 EXISTING BRICK LANDSCAPE WALL TO REMAIN
- 6 EXISTING V-DRAIN

GENERAL NOTES



**THOMSON & HENDRICKS**  
ARCHITECTS AND PLANNERS

Paul Hendricks, A.I.A.  
60 Declaration Drive, Suite A  
Chico, California 95923  
Phone: (530) 342-5668  
Fax: (530) 342-7502  
E-Mail: tandh\_arch@sbglobal.net

ADA UPGRADES  
AT THE  
**BIGGS LIBRARY**  
FOR THE  
CITY OF BIGGS

BIGGS, BUTTE COUNTY,  
CALIFORNIA

**NOT FOR  
CONSTRUCTION**

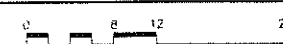
CHECKED BY MS	DRAWN BY MC
JOB NO. p29034	DATE 01-25-10
DRAWING NAME	

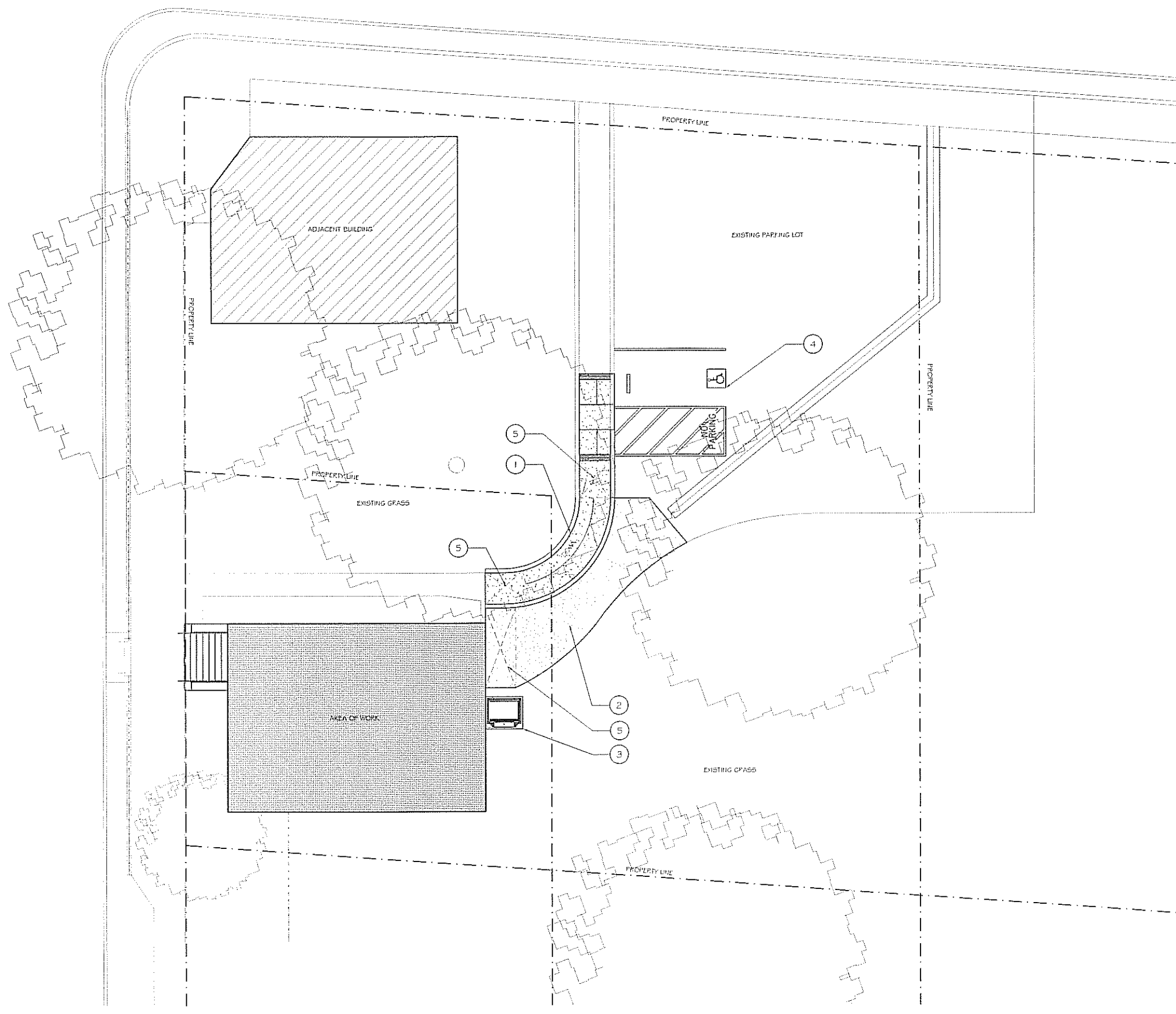
SITE PLAN

DRAWING NO.

**SP1**

DEMO SITE PLAN 1

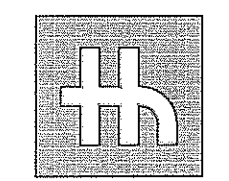




KEY NOTES

- 1 NEW CONCRETE WALK
- 2 NEW AC PAVING
- 3 NEW CONCRETE BASE FOR WHEELCHAIR LIFT
- 4 NEW ACCESSIBLE PARKING STALL STRIPING. SEE DETAIL 302
- 5 LEVEL LANDING, MAX 2% SLOPE ANY DIRECTION

GENERAL NOTES



**THOMSON & HENDRICKS**  
 ARCHITECTS AND PLANNERS  
 Paul Hendricks, A.I.A.  
 60 Declaration Drive, Suite A  
 Chico, California 95973  
 Phone: (530) 342-5888  
 Fax: (530) 342-7582  
 E-Mail: landh\_arch@stoplebal.net

ADA UPGRADES  
 AT THE  
**BIGGS LIBRARY**  
 FOR THE  
 CITY OF BIGGS

BIGGS, BUTTE COUNTY,  
 CALIFORNIA

**NOT FOR  
 CONSTRUCTION**

CHECKED BY	DRAWN BY
MS	MC
JOB NO.	DATE
p29034	01-25-10
DRAWING NAME	

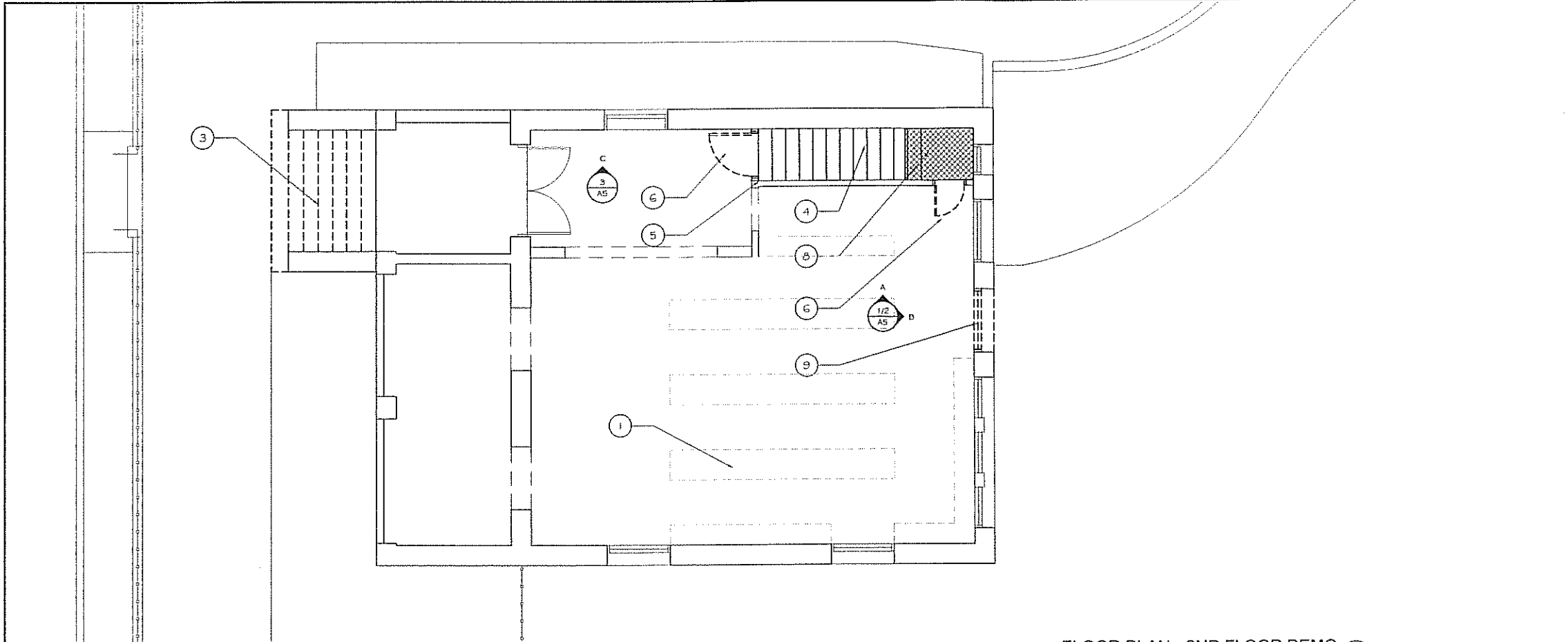
SITE PLAN

DRAWING NO.  
**SP2**

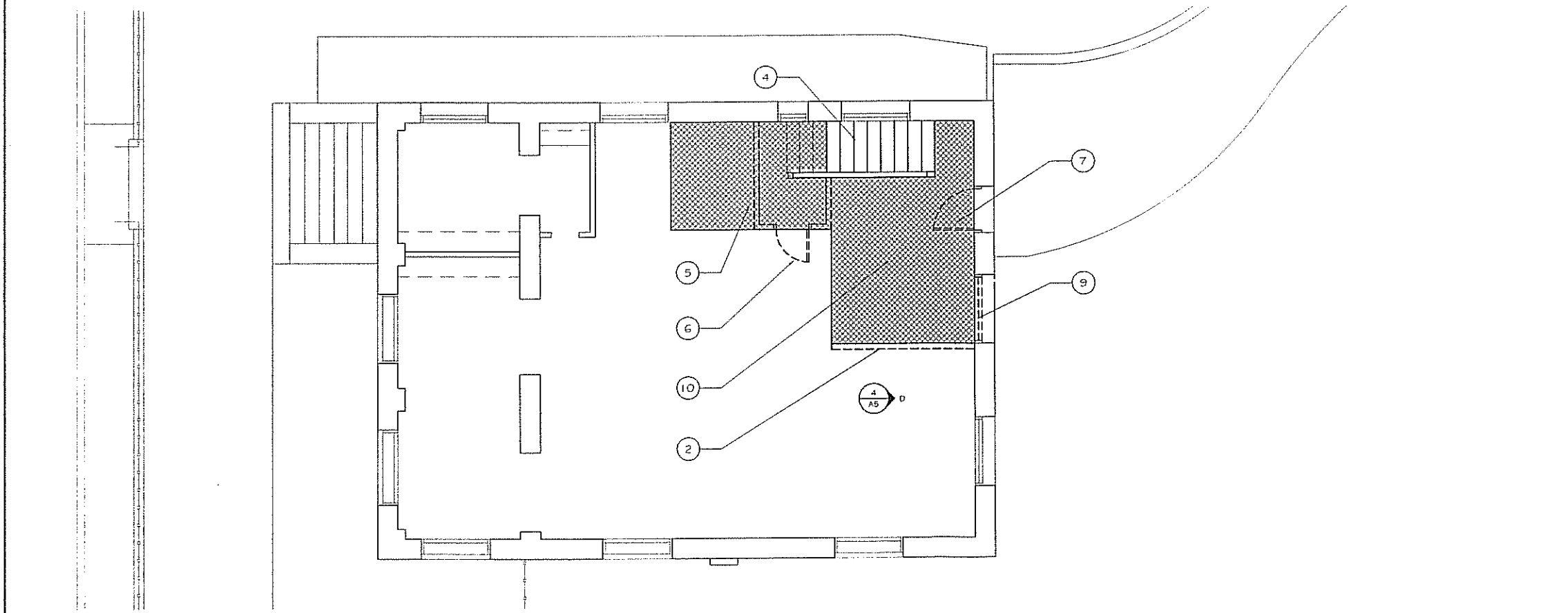
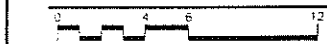
NEW SITE PLAN 1  
 1/8" = 1'-0"



DRAWN IN ACCORDANCE WITH THE CALIFORNIA ARCHITECTURAL BOARD REGULATIONS AND THE PROFESSIONAL ARCHITECTS ACT. THE CONTRACTOR SHALL VERIFY ALL DIMENSIONS, AT THE TOP AND BOTTOM OF EACH COLUMN, AT ALL CORNERS AND AT THE CENTER OF EACH COLUMN. THE CONTRACTOR SHALL VERIFY THE LOCATION OF ALL UTILITIES AND STRUCTURES. THE CONTRACTOR SHALL VERIFY THE LOCATION OF ALL UTILITIES AND STRUCTURES. THE CONTRACTOR SHALL VERIFY THE LOCATION OF ALL UTILITIES AND STRUCTURES. THE CONTRACTOR SHALL VERIFY THE LOCATION OF ALL UTILITIES AND STRUCTURES.



FLOOR PLAN - 2ND FLOOR DEMO ①  
1/4" = 1'-0"

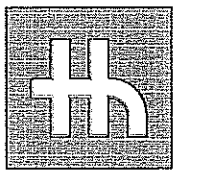


FLOOR PLAN - 1ST FLOOR DEMO ②  
1/4" = 1'-0"



KEY NOTES

- ① EXISTING BOOK CASES TO REMAIN
- ② REMOVE EXISTING PARTIAL HEIGHT WALL
- ③ REMOVE EXISTING EXTERIOR CONCRETE STAIRS
- ④ REMOVE EXISTING INTERIOR WOOD FRAMED STAIRS
- ⑤ REMOVE EXISTING WALL
- ⑥ REMOVE EXISTING INTERIOR DOOR
- ⑦ CHANGE EXISTING EXTERIOR DOOR TO SWING OUT
- ⑧ REMOVE EXISTING WOOD FRAMED FLOOR
- ⑨ REMOVE EXISTING WINDOW AND FRAME
- ⑩ REMOVE EXISTING CONCRETE FLOOR



**THOMSON & HENDRICKS**  
ARCHITECTS AND PLANNERS  
Paul Hendricks, A.I.A.  
60 Declaration Drive, Suite A  
Chico, California 95923  
Phone: (530) 342-5669  
Fax: (530) 342-7582  
E-Mail: tandh\_arch@abcglobal.net

ADA UPGRADES  
AT THE  
**BIGGS LIBRARY**  
FOR THE  
CITY OF BIGGS

BIGGS, BUTTE COUNTY,  
CALIFORNIA

GENERAL NOTES

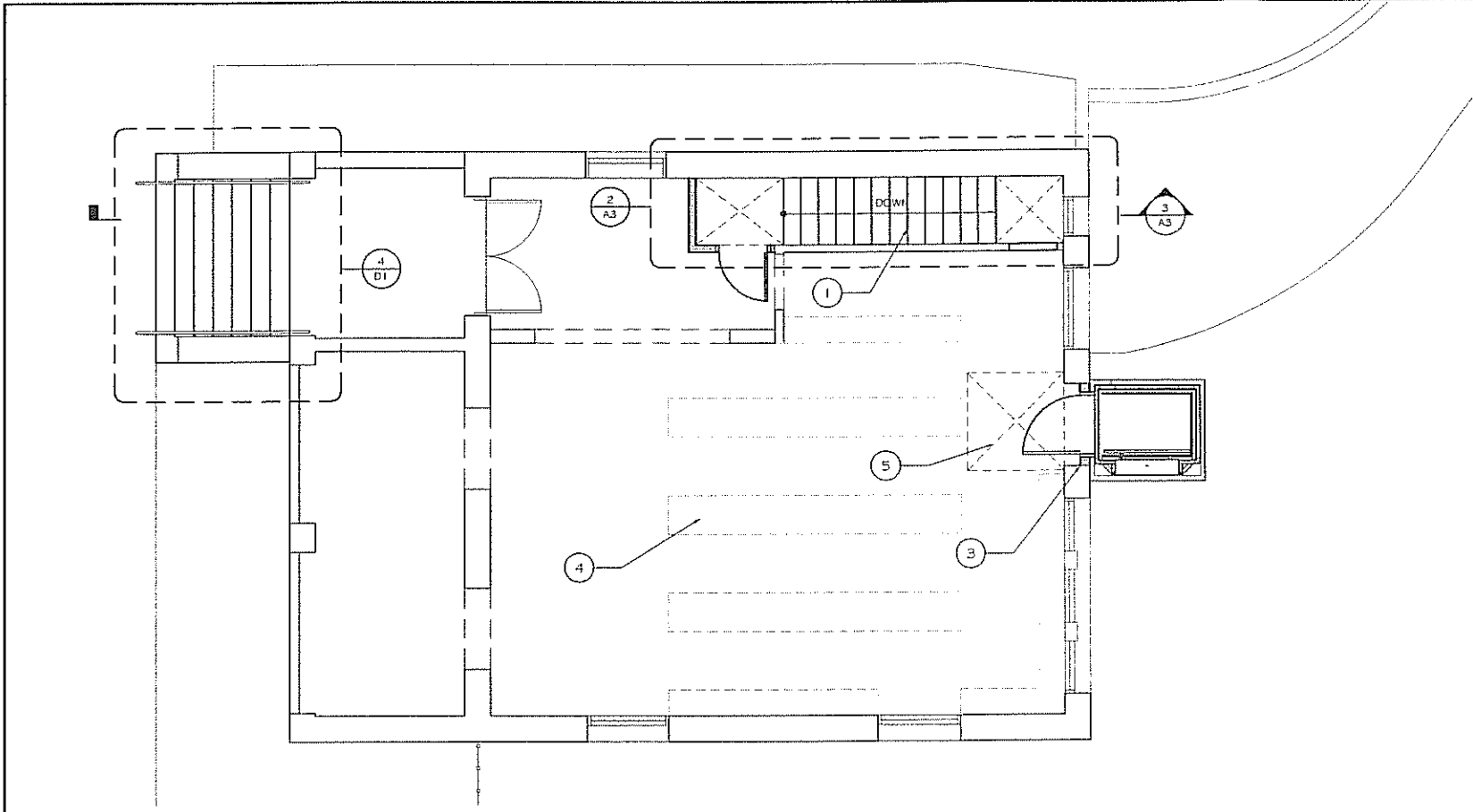
**NOT FOR CONSTRUCTION**

CHECKED BY MS	DRAWN BY MC
JOB NO. p29034	DATE 01-25-10
DRAWING NAME	

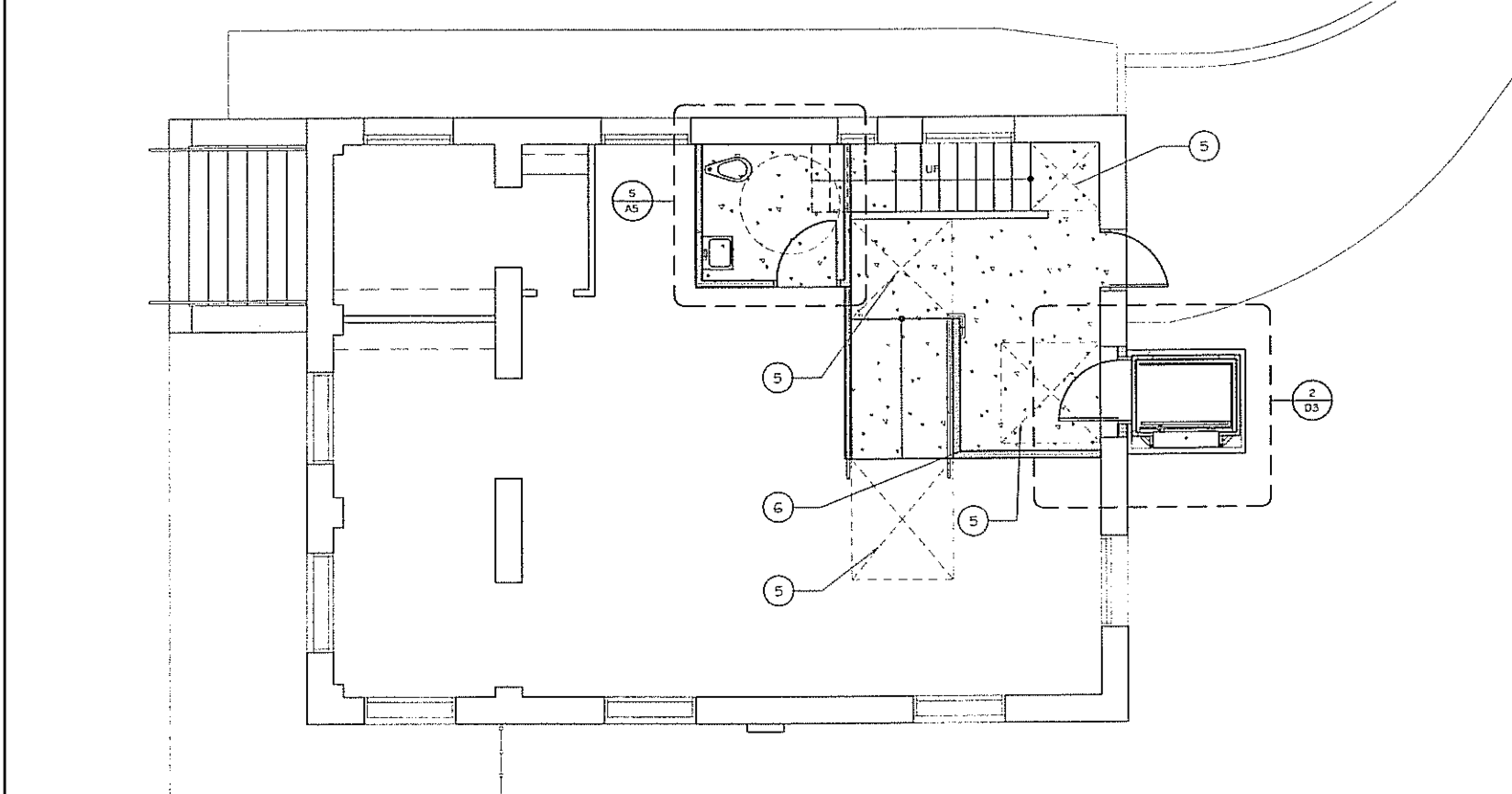
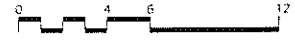
FLOOR PLAN DEMO

DRAWING NO.  
**A1**

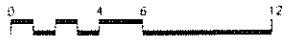
DRAWING AND SPECIFICATIONS ARE THE PROPERTY OF THE APPLICANT. THE CONTRACTOR SHALL VERIFY ALL DIMENSIONS AT THE JOB AND SHALL BE RESPONSIBLE FOR ALL DISCREPANCIES BETWEEN DIMENSIONS OF THE ACTUAL WORK AND THOSE SHOWN IN THE DOCUMENTS OR OTHERWISE. THE CONTRACTOR SHALL NOT BE HELD RESPONSIBLE FOR ALL QUANTITIES OF MATERIAL OR ESTIMATED SALES TAX TO BE PAID FOR THE WORK.



FLOOR PLAN - 2ND FLOOR NEW ①  
1/4" = 1'-0"



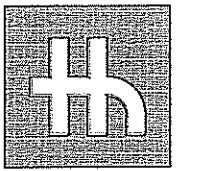
FLOOR PLAN - 1ST FLOOR NEW ②  
1/4" = 1'-0"



KEY NOTES

- ① NEW ENCLOSED PLATFORM LIFT
- ② NEW WALL INFILL
- ③ NEW STAIRS
- ④ EXISTING BOOK CASES
- ⑤ LEVEL LANDING AREA
- ⑥ NEW PARTIAL HEIGHT WALL

GENERAL NOTES



**THOMSON & HENDRICKS**  
ARCHITECTS AND PLANNERS  
Paul Hendricks, A.I.A.  
60 Declaration Drive, Suite A  
Chico, California 95923  
Phone: (530) 342-5669  
Fax: (530) 342-7592  
E-Mail: tandh\_arch@sbglobal.net

ADA UPGRADES  
AT THE  
BIGGS LIBRARY  
FOR THE  
CITY OF BIGGS

BIGGS, BUTTE COUNTY,  
CALIFORNIA

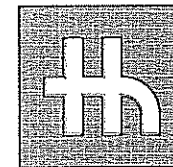
**NOT FOR  
CONSTRUCTION**

CHECKED BY MS	DRAWN BY MC
JOB NO. p29034	DATE 01-25-10
DRAWING NAME	

FLOOR PLAN NEW

DRAWING NO.  
**A2**

DRAWING AND SPECIFICATIONS, AS INSTRUMENTS OF SERVICE, ARE THE PROPERTY OF THE ARCHITECT. THE CONTRACTOR SHALL VERIFY ALL DIMENSIONS AT THE JOB AND SHALL BE RESPONSIBLE FOR ALL DISCREPANCIES BETWEEN DIMENSIONS ON THE ACTUAL WORK AND THOSE SHOWN IN THE DRAWINGS. ANY DISCREPANCIES SHALL BE REPORTED TO THE ARCHITECT IMMEDIATELY UPON DISCOVERY. THE CONTRACTOR SHALL ACCEPT FULL RESPONSIBILITY FOR ALL QUANTITIES OF MATERIALS AND EQUIPMENT. ALSO SEE THE PROJECT MANUAL FOR THE WORK.



THOMSON & HENDRICKS

ARCHITECTS AND PLANNERS

Paul Hendricks, A.I.A.

60 Declaration Drive, Suite A

Chico, California 95973

Phone: (530) 342-5689

Fax: (530) 342-7562

E-Mail: tandh\_arch@stglobal.net

ADA UPGRADES  
AT THE  
BIGGS LIBRARY  
FOR THE  
CITY OF BIGGS

BIGGS, BUTTE COUNTY,  
CALIFORNIA

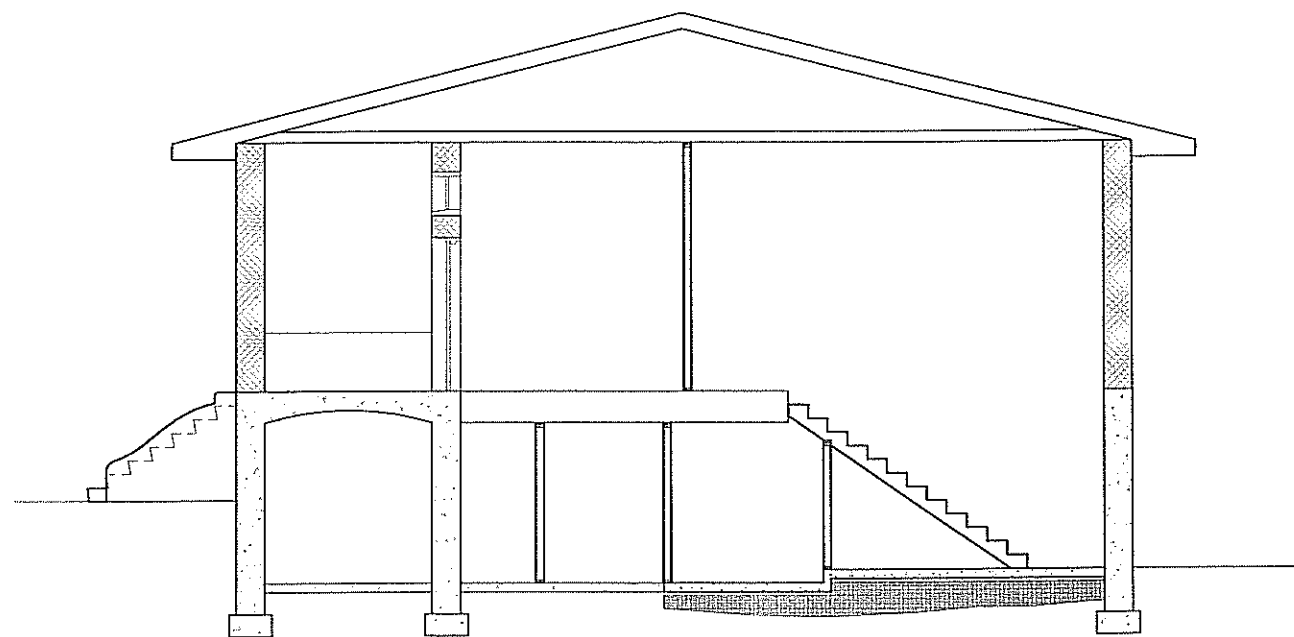
NOT FOR  
CONSTRUCTION

CHECKED BY	DRAWN BY
MS	MC
JOB NO.	DATE
p29034	01-25-10
DRAWING NAME	

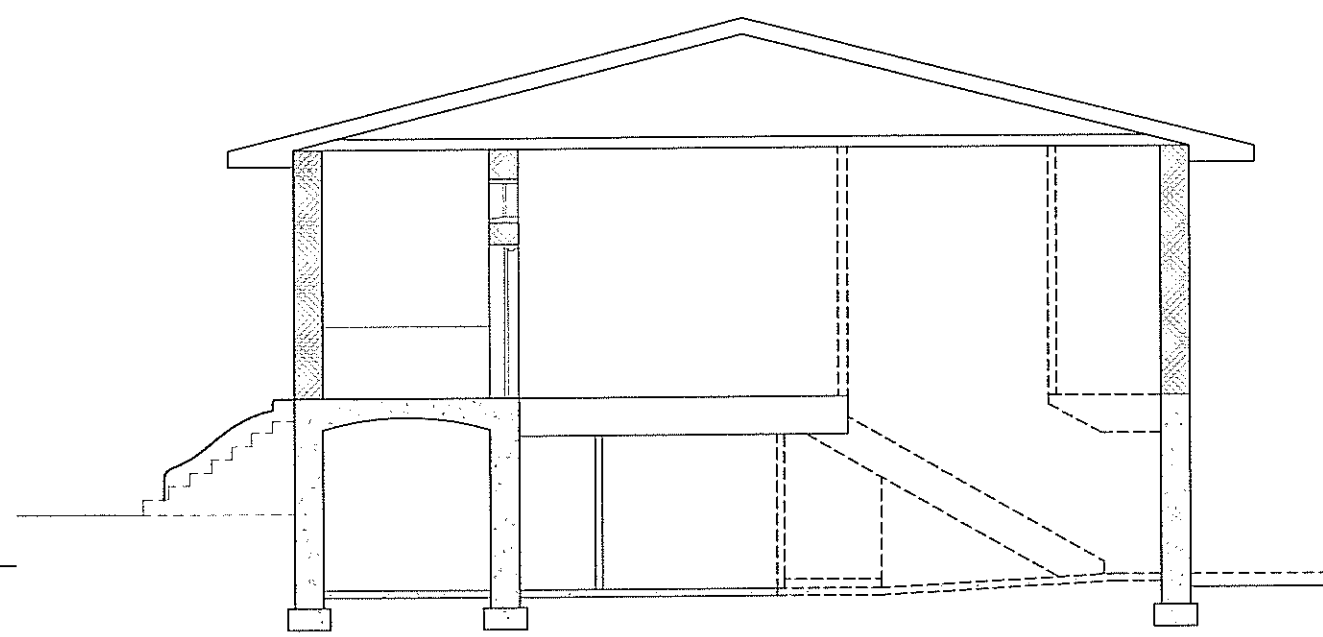
SECTION

DRAWING NO.

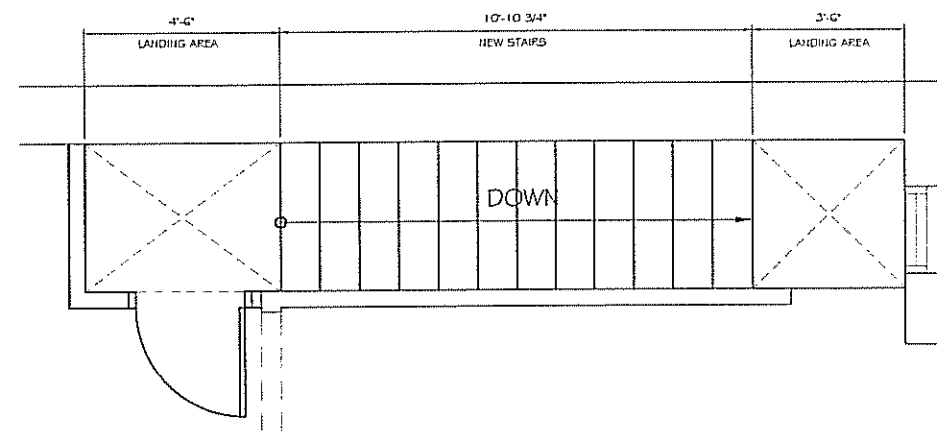
A3



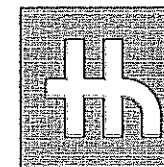
STAIR SECTION - NEW ③  
1/4" = 1'-0"



STAIR SECTION - DEMO ①  
1/4" = 1'-0"



ENLARGED INTERIOR STAIR ②  
1/4" = 1'-0"



THOMSON & HENDRICKS

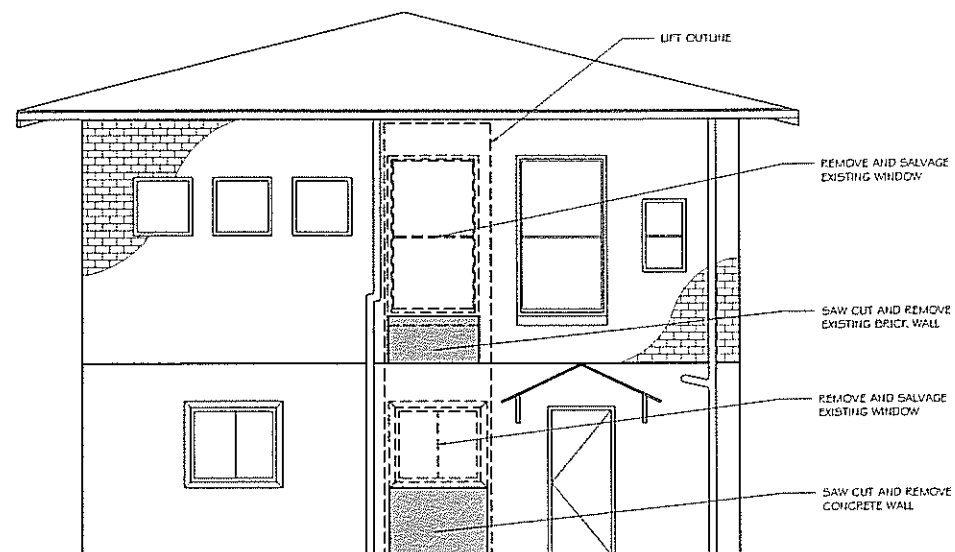
ARCHITECTS AND PLANNERS

Paul Hendricks, A.I.A.

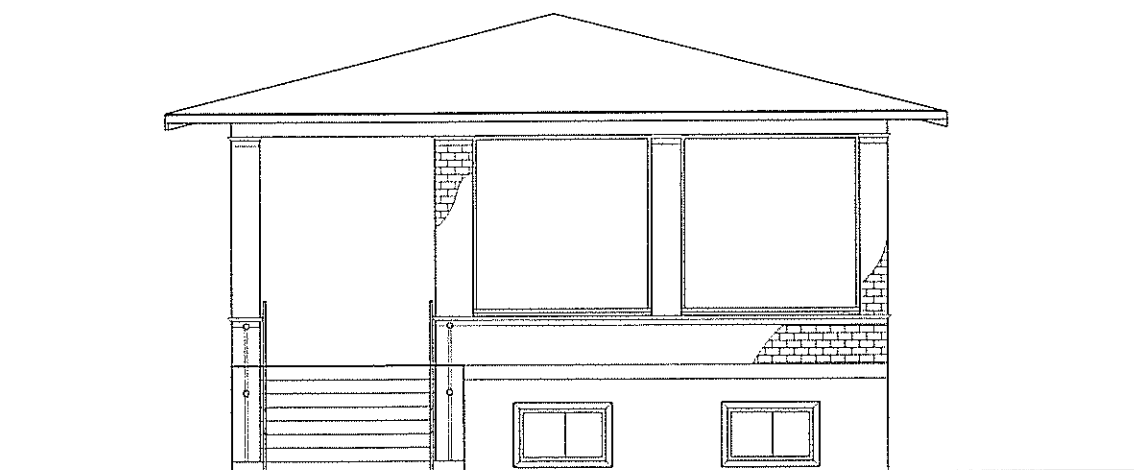
60 Declaration Drive, Suite A  
Chico, California 95913  
Phone: (530) 342-8569  
Fax: (530) 342-7582  
E-Mail: tandh\_arch@sbcglobal.net

ADA UPGRADES  
AT THE  
BIGGS LIBRARY  
FOR THE  
CITY OF BIGGS

BIGGS, BUTTE COUNTY,  
CALIFORNIA



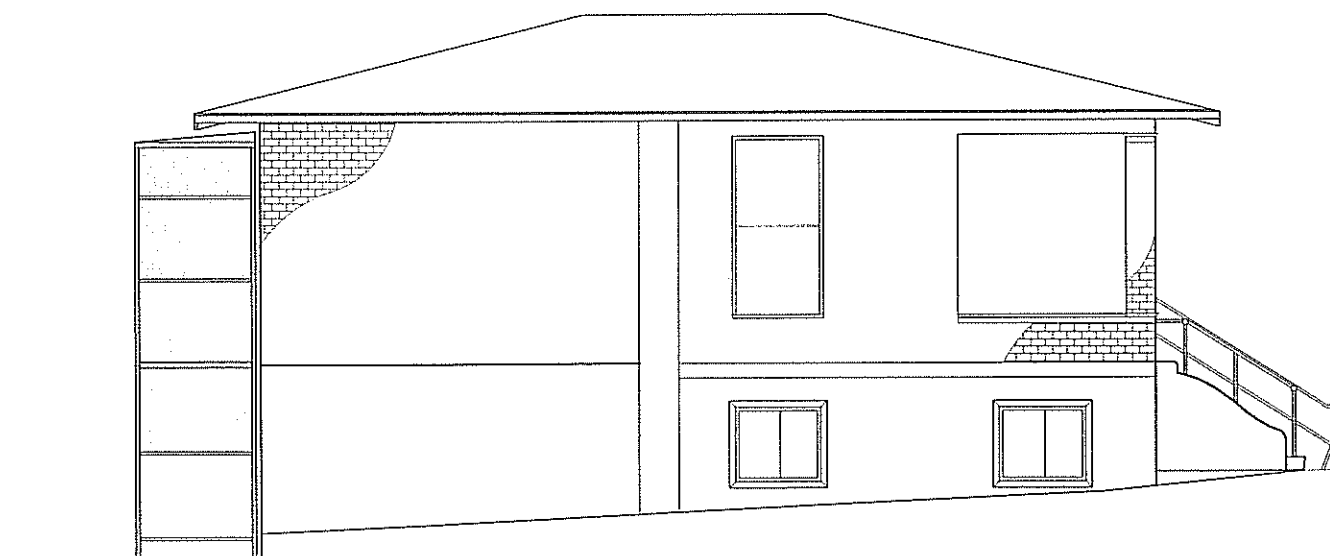
REAR DEMO ELEVATION ③  
1/4" = 1'-0"



FRONT ELEVATION ①  
1/4" = 1'-0"



REAR NEW ELEVATION ④  
1/4" = 1'-0"



SIDE ELEVATION ②  
1/4" = 1'-0"

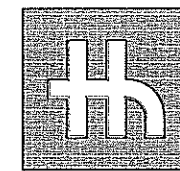
NOT FOR  
CONSTRUCTION

CHECKED BY	DRAWN BY
MS	MC
JOB NO.	DATE
p29034	01-25-10
DRAWING NAME	

ELEVATION

DRAWING NO.

A4



**THOMSON & HENDRICKS**  
 ARCHITECTS AND PLANNERS  
 Paul Hendricks, A.I.A.  
 60 Declaration Drive, Suite A  
 Chico, California 95973  
 Phone: (530) 342-5668  
 Fax: (530) 342-7582  
 E-Mail: landh\_arch@sbccglobal.net

ADA UPGRADES  
 AT THE  
**BIGGS LIBRARY**  
 FOR THE  
 CITY OF BIGGS

BIGGS, BUTTE COUNTY,  
 CALIFORNIA

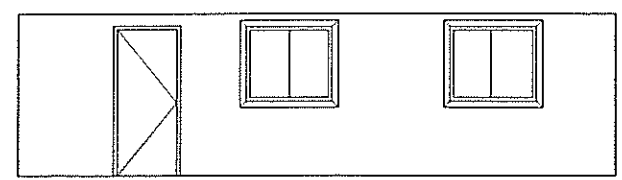
**NOT FOR  
 CONSTRUCTION**

CHECKED BY MS	DRAWN BY MC
JOB NO. p29034	DATE 01-25-10

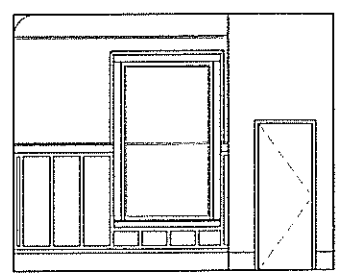
DRAWING NAME  
**INTERIOR  
 ELEVATION /  
 ENLARGED PLANS**

DRAWING NO.

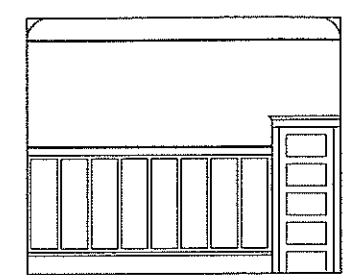
**A5**



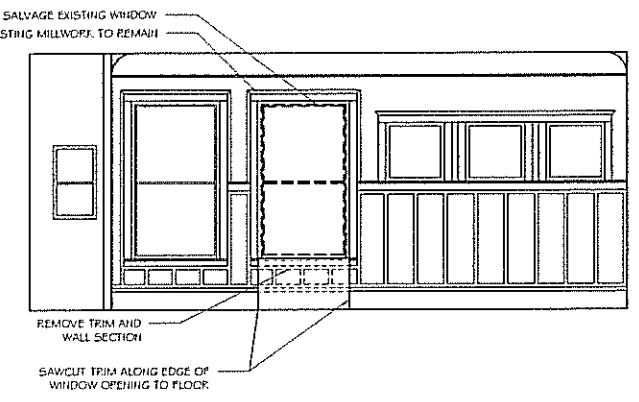
**ELEVATION - D** ④  
 1/4" = 1'-0"



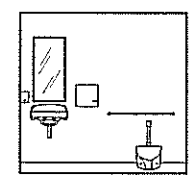
**ELEVATION - C** ③  
 1/4" = 1'-0"



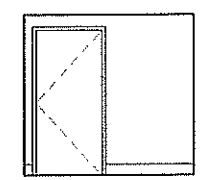
**ELEVATION - B** ②  
 1/4" = 1'-0"



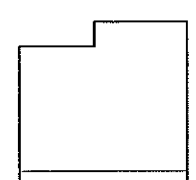
**ELEVATION - A** ①  
 1/4" = 1'-0"



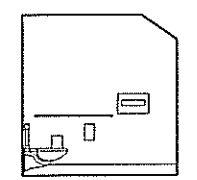
**ELEVATION - D** ⑨  
 1/4" = 1'-0"



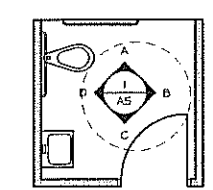
**ELEVATION - C** ⑧  
 1/4" = 1'-0"



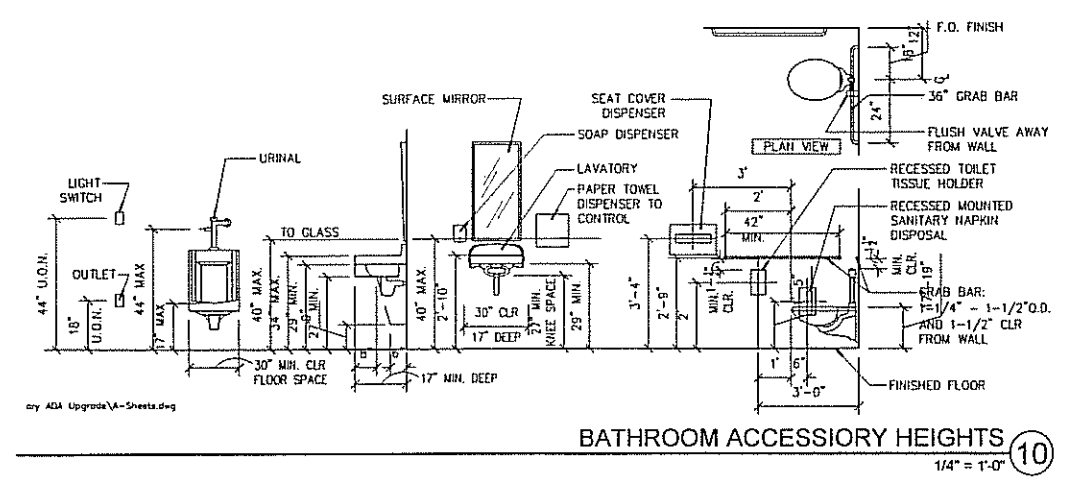
**ELEVATION - B** ⑦  
 1/4" = 1'-0"



**ELEVATION - A** ⑥  
 1/4" = 1'-0"

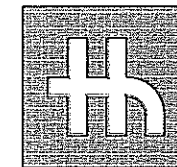


**BATHROOM PLAN** ⑤  
 1/4" = 1'-0"



DRAWINGS AND SPECIFICATIONS ARE THE PROPERTY OF THE ARCHITECT. THE CONTRACTOR SHALL OBTAIN ALL NECESSARY PERMITS AND SHALL BE RESPONSIBLE FOR ALL NECESSARY ESTABLISHMENT OF THE LOCAL WATER AND SEWER SYSTEMS AND THESE SYSTEMS AND EQUIPMENT IS AVAILABLE FOR USE. THE CONTRACTOR SHALL ALSO BE RESPONSIBLE FOR THE PROTECTION OF ALL UTILITIES AND EQUIPMENT. THE CONTRACTOR SHALL ALSO BE RESPONSIBLE FOR THE PROTECTION OF ALL UTILITIES AND EQUIPMENT. THE CONTRACTOR SHALL ALSO BE RESPONSIBLE FOR THE PROTECTION OF ALL UTILITIES AND EQUIPMENT.





**THOMSON & HENDRICKS**  
ARCHITECTS AND PLANNERS

Paul Hendricks, A.I.A.  
50 Declaration Drive, Suite A  
Chico, California 95973  
Phone: (530) 342-5659  
Fax: (530) 342-7587  
E-Mail: tandh\_arch@sbcglobal.net

ADA UPGRADES  
AT THE  
BIGGS LIBRARY  
FOR THE  
CITY OF BIGGS

BIGGS, BUTTE COUNTY,  
CALIFORNIA

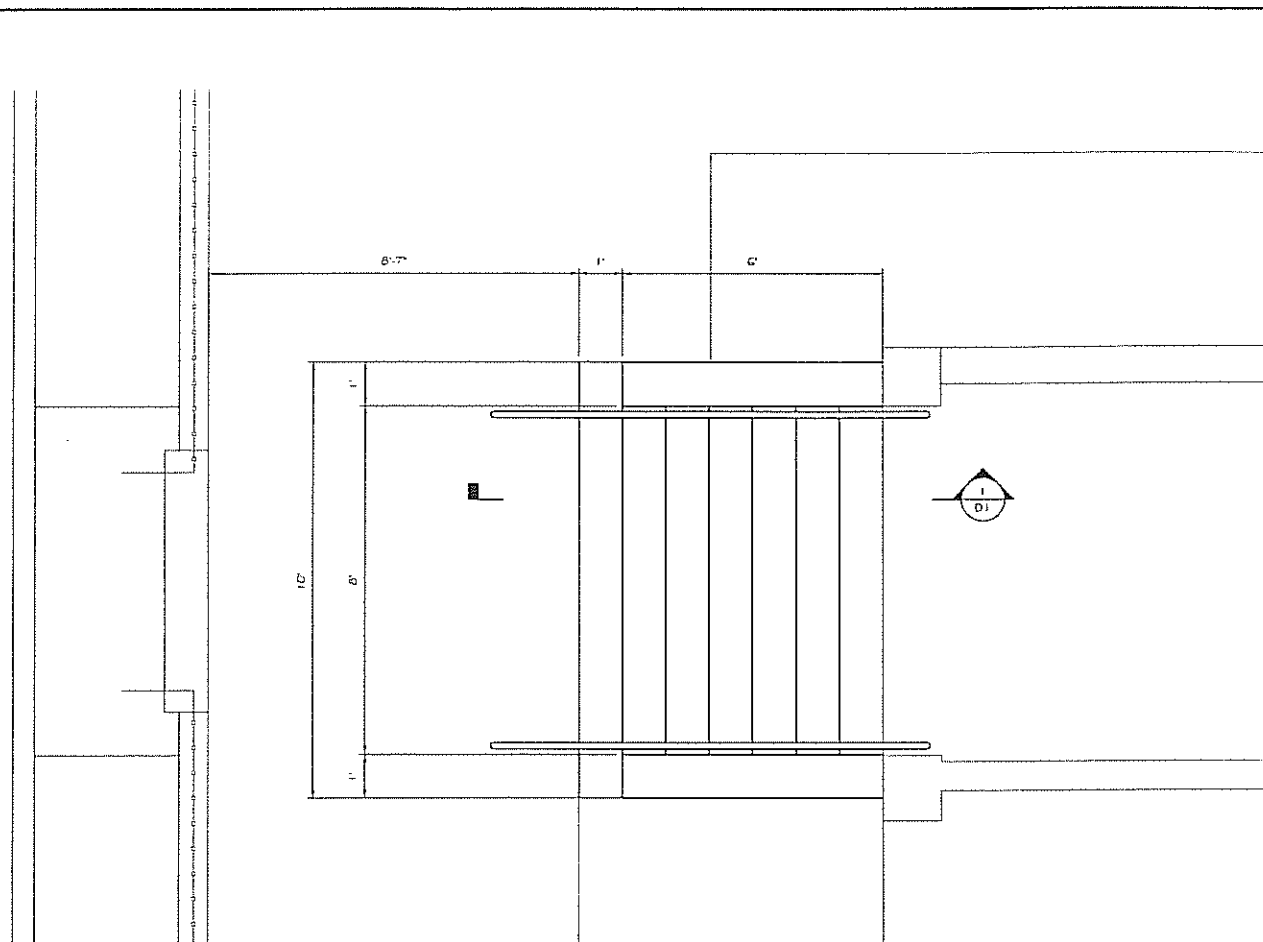
**NOT FOR  
CONSTRUCTION**

CHECKED BY	DRAWN BY
MS	MC
JOB NO.	DATE
p29034	01-25-10
DRAWING NAME	

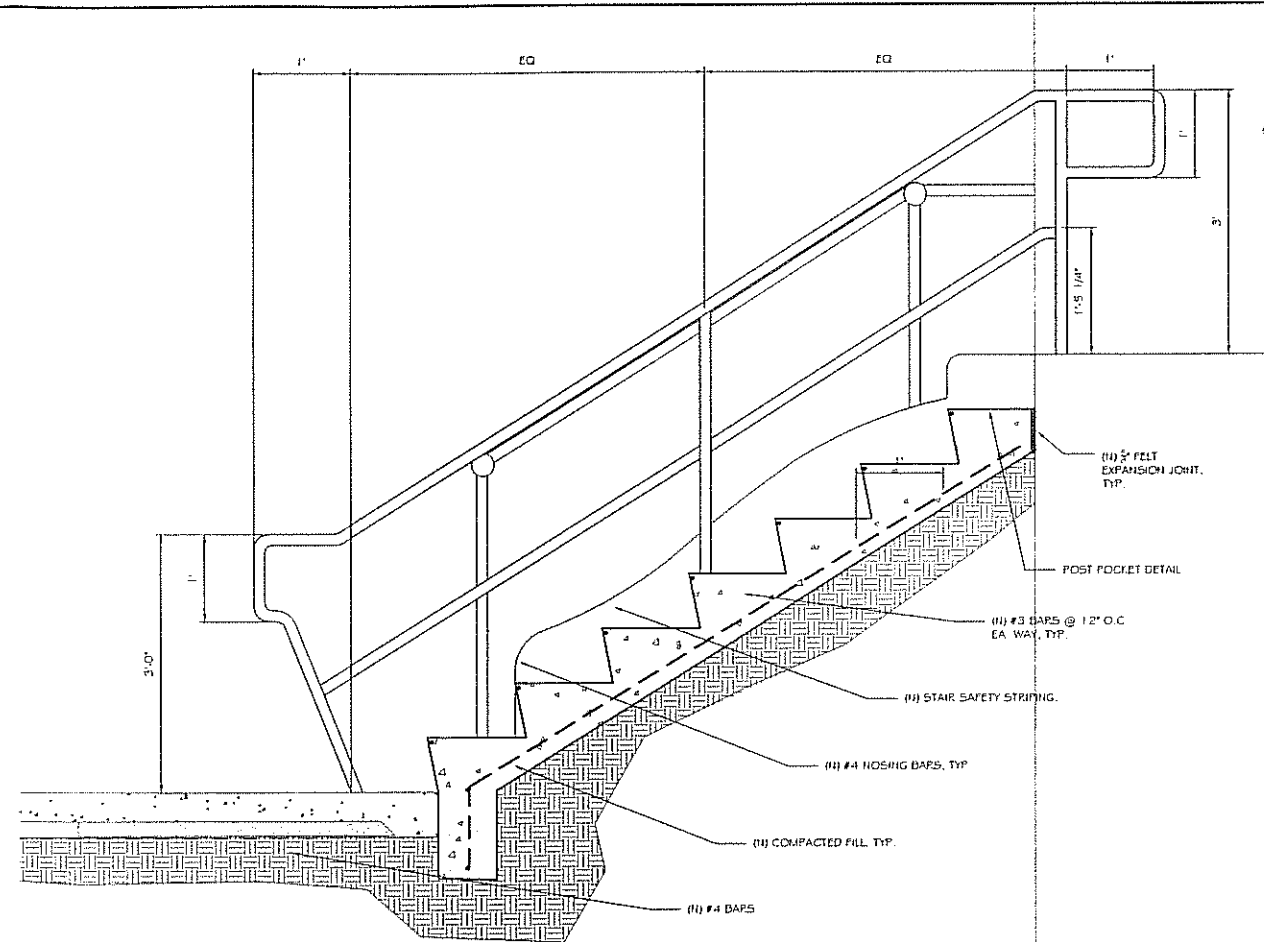
DETAILS

DRAWING NO.

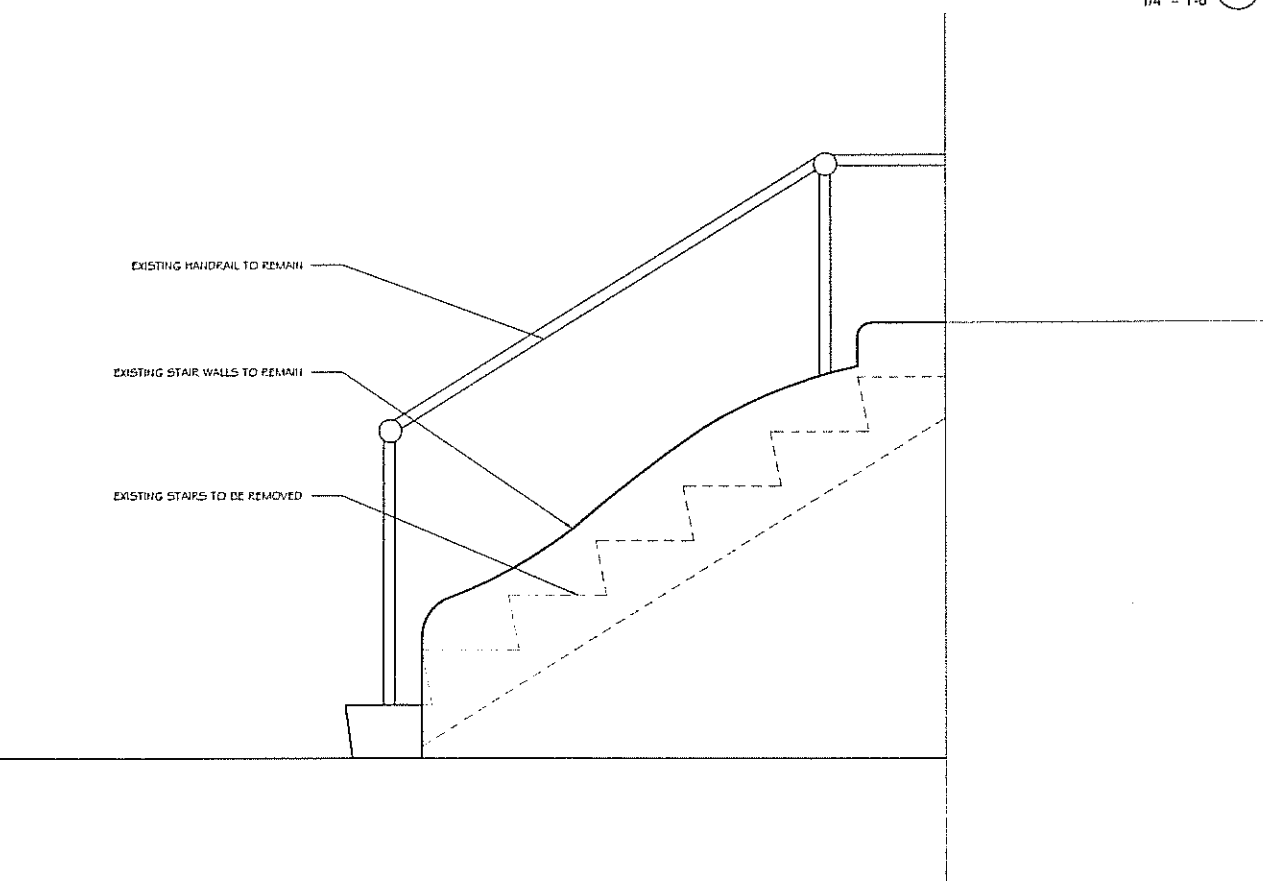
**D1**



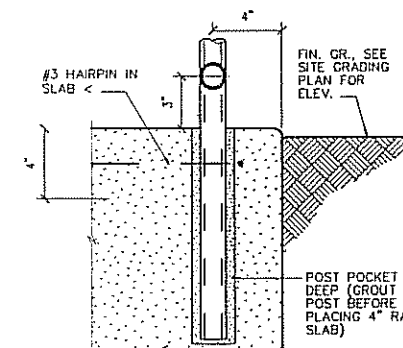
STAIR SECTION 4  
1/4" = 1'-0"



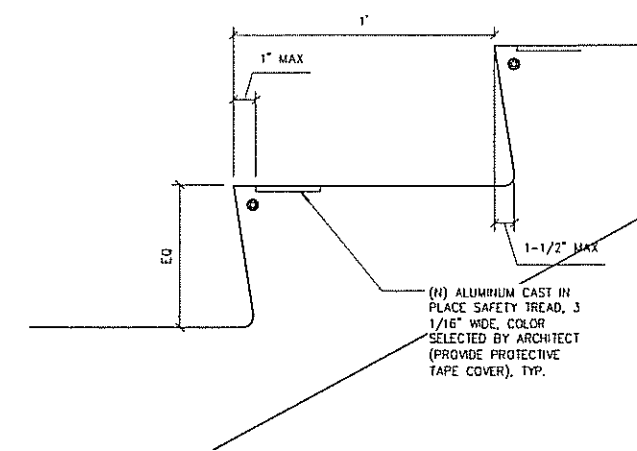
STAIR SECTION 1  
1/4" = 1'-0"



STAIR ELEVATION 5  
1" = 1'-0"



POST POCKET 3  
3" = 1'-0"



STAIR NOSE 2  
3" = 1'-0"